

The Global Mountain Program

Annual Report 2006

(Draft 24 May 2007)

www.globalmountainprogram.com

The Global Mountain Program (GMP)

The Global Mountain Program is a system wide program of the Consultative Group on International Agricultural Research (CGIAR). It was created by the CGIAR to respond to Agenda 21 to address key issues identified in Chapter 13 on the sustainable management of fragile mountain environments, especially as it related to issues in Chapter 14 on Agriculture. Since Johannesburg commitments to achieving the Millennium Development Goals (MDGs) provide additional relevance to the program.

Mission:

To support the Millennium Development Goals the GMP seeks to bring together scientific expertise of the CGIAR, local knowledge of mountain people and partner institutions to find solutions to foster sustainable mountain development

Broad goals:

1. Increased food and economic security that improve the well being of mountain people
2. Improved upper watershed management that enhance rural livelihoods and environmental services
3. Conservation, understanding and use of the wealth of mountain biodiversity for the benefit of mountain people.
4. Better mountain policies developed through informed and participatory policymaking.
5. Sustainable agriculture as stated in chapter 13 of Agenda 21

It does this through

1. Engagement in the Global Discussion on mountains.
2. Development of a CGIAR wide platform for joint work for mountains.
3. Support of research to better understanding of the biophysical and socio-economic processes directly impinging on the livelihoods of mountain people.
4. Enhancing the exchange of knowledge of successful experiences between mountain regions.

Governance:

The GMP is governed programmatically by a Steering Committee that meets once a year. Overall, legal governance oversight is provided by the CIP board. Chair is elected for a three year term.

Members of the Steering Committee 2006

Dr. Laura German (interim Coordinator AHI), Dr. W. Gabriel Campbell (Director ICIMOD), Dr. Hector Cisneros (Coordinator CONDESAN), Ms Anne Germain (CIDA), Spain INIA (Representative to be advised), Dr. Ola Smith (GFAR), Chair (to be announced by CIP), Dr. Peter Trutmann (Leader GMP).

Management

Leader: Dr. Peter Trutmann

Financial Support in 2005

We gratefully acknowledge support from the Government of CANADA (CIDA), and United Nations Food and Agricultural Organization (FAO)

CONTENTS

CONTENTS **2006 Overview**

Mountains and the GMP Thematic Action Areas

Mountain Policies

Background
MTP output target
Discussion

Strengthening Rural Urban Linkages

Background
MTP Output target
Discussion

Information and tools for Mountain People

Background
MTP output target

Engagement in the Global Dialogue on Mountains

Background
The Adelboden Group
GLOCHAMORE conference
Mountain Forum
Mountain Partnership

Finances

Funding 2006

Overview 2006

2006 has been a year of construction and of new products as the new CGIAR MTP output based reporting is tested.

Two mountain policy analyses reports were finished with CONDESAN partners in the Andes as part of a global effort coordinated by the SARD-M Project at the FAO. A third, analysis is being conducted in Ecuador. These reports were associated with local and national workshops analyses of the perception of upper-watershed groups in the Andes on the effectiveness of policies to manage water, land and forests in mountains. An Andean regional workshop is being planned for 2007.

The Rural Urban Linkage (RUL) thematic action area has boosted through engagement of a Regional Research Fellow, the RUL coordinator Dr. Gete Zeleke, in Addis Ababa, Ethiopia. This is the first of a series of global benchmark sites that will be linked. Much interest has been aroused in Ethiopia: the Government has included RULs in the, the PASDEB document, its 5-year plan. As part of the strategy to develop the operational research framework to link research support with development, and to link institutions in Ethiopia to strengthen RUL, a planning workshop was held with 60-80 inter-sect oral and national partners from both rural and urban organizations. The meeting was attended by the State Minister of Agriculture and Rural Development, Dr. Abara Deresa. The RUL thrust was endorsed as very important for Ethiopia, a framework for action including a RUL platform and key action areas were defined. The GMP has been given secretarial role to the National RUL platform, which will be chaired by the State minister of Agriculture and the State Minister of Urban Development. A RUL research support group has been established that thus far includes CGIAR centers, CIP, CIAT, CIFOR, ILRI, IWMI and IFPRI and the SWEPS AHI and Urban Harvest. Members have met twice in 2006. Finally the Donor Assistance group (DAG) in Ethiopia has requested a proposal from the GMP alliance.

The Information and support for mountain people theme has not been moving forward as fast as anticipated. However, our support in the form of an information position with AHI in Uganda has resulted in the reestablishment of the Mountain Forum services in Africa. The Node manager has succeeded in reestablishing a network and has enabled better communication in the African highlands by engaging its network in e-discussions, e-consultations on mountain issues, and issued a newsletter. A second part of the work to support the information collection part of our output has so far been less successful. However, AHI information and tools have been collected

We have continued to strengthen our engagement with international bodies set up to promote the Mountain agenda associated with commitments to Agenda 21. Our engagement has been particularly with Mountain Forum, the Adelboden Group and early in the year with the Mountain Partnership.

Funding for the program received a boost this year through a new grant from the Government of Canada's (CIDA) and a smaller grant from the SARD-M project of the Adelboden Group. We have also been working closely with the Donor Assistance Group and the Government of Ethiopia and have been asked for a proposal for funding the RUL initiative.

The GMP's relevance within the CGIAR system relative to the 17 SWEPSs was assessed late 2005 by the Ponce review commissioned by the CGIAR Secretariat. The GMP was placed 8th in the group and was considered a high relevance SWEPS. Even so, we missed out on a piece of the USD 1.5 million total funding made available by the WB for all the SWEPSs in 2006. A second review was commissioned in 2006 by the Science Council to assess the relevance and value to the CGIAR of the SWEPSs as a whole. The Science Council has been severely criticized for the TOR, methodology and process. The methodology chosen was a desktop review using only 2ndary information, principally EPMSs, and explicitly no primary input by SWEPS leaders or CGIAR Centers or partners. It is worth mentioning that the review with all its limitations affirmed the high relevance of SWEPSs to the CGIAR system outputs and innovative methodology development, especially in INRM, and the need for more commitment to these programs by the CGIAR System. The review did not tackle institutional issues well that would better enable the programs to fulfill their system wide mandate or compensate better the hosting Centers for their service to the system as a whole.

Within the GMP governance, there have been a number of changes in the SC: Dr. Hector Cisneros left CONDESAN in August, Dr. Laura German of AHI in December and the CIDA representatives have changed as well. Until the new chair is selected the GMP continues to receive oversight from the DDG of Research at CIP, as well as from the Board of CIP which has overall legal responsibility for the program. I would like to thank the SC members who are or have left the leaving for serving on the Steering Committee. We very much appreciate your inputs and support to the program.

Our grateful thanks to the Canadian International Development Agency (CIDA) for its past and renewed support to the program in 2006. Little of this work could have been achieved without their support. and confidence in the program. Also our thanks to ICRAF for its support staffing with AHI, in Ethiopia and for ILRI for finding space in its facilities and support in Ethiopia after departure of ICRAF. Last, but not least many thanks to CIP for providing housing, oversight and for convening the program for the CGIAR system.

Sincerely,



Peter Trutmann
Leader



Mountains and the GMP thematic action areas

Mountains embody fragile, topographically highly variable, often difficult environments that amount for 24% of the earth's landmass. They are the source of 80% of the world's fresh water, 50% of the biodiversity and 35% of the world's forests and home for 720 million people, often indigenous, who are usually knowledge rich and culturally diverse, but are counted amongst the world's poorest and marginalized. For example, in the IAC report on Africa, five of the eight poverty hotspots are in the mountains. In the past, the mountain populations did not profit from science-based opportunities in comparison to those living in the favored environments of the lowlands.

The people and environment in mountains are particularly vulnerable to processes of globalization, urbanization and climate change due to their added disadvantage of poor infrastructure, education, support and remoteness to markets and political power. On the other hand, mountain resources are being increasingly exploited by international markets, national urban centers and local mountain inhabitants. At the same time lack of opportunity is driving out-migration and affecting the maintenance of agricultural, rural and family infrastructure. Serious deterioration has taken place of these fragile environments. Reversing the trends requires mountain specific research on key issues to provide more enabling policies and support to mountain people.

Reflecting on the role of the CGIAR in mountains, and the need to inter-connect the system priorities, it is apparent that individual centers have over the years invested substantial research for mountainous regions. Much capacity and experience is available in areas of agricultural technology, forestry, natural resource management, management of genetic diversity and policy. The problems in mountains are complex and often are institution and process based, rather than purely technological. However, few of these issues have been dealt with in an integrated and interconnected, CGIAR wide manner, nor has there been a center level synthesis of products for mountain environment, or dialogue on development of coherent research strategies by the system to have broad impact in these complex fragile systems. The GMP is designed to facilitate process, linkages, developing platforms, bringing the system together to create added value in mountains.

The GMP aim is to serve as a connector in mountains between the 20 system wide priorities. The project does this through creation of innovative and challenging thematic research areas that connect system priorities. For example, output 2 is connected to the theme Strengthening Rural Urban Linkages. It covers many of the priorities of the system and is designed also to link to development through facilitation of a stakeholder platform on Rural Urban Linkages (RUL) that brings together all-important stakeholders to tackle the issues collectively within a benchmark site. Part of the input to the group is provided by the CGIAR and other research organizations. Using benchmark sites enable clear impact pathways to impact from research to MDGs and use of multiple sites around the world promotes further development of international public goods and opportunities for information sharing between benchmark sites. Using the RUL design enables the CG and partners to move away from a mosaic approach to development support to a coordinated focused research for development approach. The expected end result is a value added product with far greater impact than what each center could produce alone.

The Program has Three active thematic action areas: Mountain Policy, Strengthening Rural Urban Linkages in Mountains, and Improved Information for mountain People. A fourth, as yet inactivated priority area is, 'reduced vulnerability to Global change in mountains.

In the following sections of the report we report on progress in the three thematic areas and outputs thus far. We divide outputs between process and research, because the nature of the program outputs is poorly reflected in the new reporting guidelines of the CGIAR Science Council, which itself has come under a great deal of criticism. We also report on progress in the engagement of the program in promoting the global mountain agenda.

Improved Mountain Policies

Background

The GMP mountain policy work in 2006 is embedded in a global project at the FAO by the SARD-M Project of the Adelboden Group. More information can be found on the SARD-M Project at FAO in the following URL (<http://www.fao.org/sard/en/sard/754/1254/index.html>) Our role has been particularly to support the objective 1. To assess the strengths and weaknesses of mountain policies, including social, economic, institutional and environmental aspects, in relation to sustainable agriculture and rural development principles. In April we met with other focal point members of the SARD-M Project in a workshop in Rome. The other members are ICIMOD for the HKH, Euromontana for Northern Europe, PASOLAC in Central America, UNDP for the Carpathian Convention, and CIHEAM-IAM Bari in collaboration with Plan Bleu in the Mediterranean Basin. The SARD-M project is now conducting a global analysis of all the reports on mountain policies. The analysis will be presented to the Adelboden Group in October 2007 where from we hope the results will be taken to various Agenda 21 related committees by donor and national representatives.

Introduction

Mountain resources play an important role in development of countries, providing resources like water, minerals, agricultural products, electricity, human resources, tourist destinations and places for spiritual reflection. Enabling policies, including those for agriculture and rural development, are regarded by some sources as the single most important factor influencing the sustainable development of mountain areas. Only few countries have adopted coherent policies for the development of mountains. The most evident places of failed or non-existent policies are those where there are conflicts over resources or territory, such as water, mining, and forests. In other cases such as soils and cultural, bio and genetic diversity there are wide spread, but less politically visible crises. Often these problems are related to centralized, sectoral, rather than decentralized territorial resource allocations and lack of opportunity for rural populations and a lack of policies that provide incentives for stewardship of resources.

The GMP reported results of a study on mountain policies for mountains in the east African Highlands with AHI, ICRAF and University of Nairobi in 2005 (Ritho 2005). Together with CONDESAN we have been analyzing the strengths and weaknesses of existing policies for Sustainable Agriculture and Rural Development in mountains (SARD-M) in Peru, Colombia and Ecuador in the Andes. The project is part of a global analysis of mountain policies of Sustainable Agriculture and Rural Development in Mountains supported through the SARD-M project at FAO.

MTP output target 2006 (achievement 70%)

Regional analysis of SARD-M policies in the Andes is available based on three country studies and with workshop inputs.

Two studies have been completed for Peru (Bustamente et al 2006) and Colombia (Moreno et al 2006) and the Ecuador study is in progress. National workshops have

been held in Peru and Colombia. Funding for the Regional Workshop is being negotiated with FAO.

Results from Colombia and Peru show differences in the degree of articulation of national visions of development, and mountains are not specifically addressed. Agricultural policies and investment in both countries is focused on high potential commercial areas well connected to political decision-making. When policies address mountain issues their nature is sectoral, rather than territorial. For the three sectors that we selected, water, land and forests the perception of people surveyed was that the policies were ineffective or inequitable in the upper watersheds. Policies were not known or understood by the large majority of upper-watershed people. An indicator of policy failure is that rural mountain areas remain some of the most impoverished in the region. Local people were rarely involved in development of policy development process or know of their existence, and rarely felt that the laws serve their interest and remained marginalized in the national political process concerning their resources.



We are awaiting completion of a third study from Ecuador before holding the Andean regional workshop next year. A regional analysis is also planned in 2007.

We are negotiating with SARD-M to link the SARD-M policy studies with our own in Ethiopia. The absence of African studies in the policy analyses has been a big gap for the SARD-M project. Others might follow in other parts of Africa perhaps jointly with AHI, although SARD-M although we are uncertain whether SARD-M will continue to support mountain policy studies in the next two years.

Strengthening Rural Urban Linkages and livelihood options in mountains

Background

One of the mission tasks of the GMP as an umbrella program is to bring together the resources of the CGIAR to support the MDGs in mountains. However, to add value to CGIAR resources one needs a conceptual framework that will add value to the activities in which the CGIAR is already engaged. The existing problem is that activities of the CGIAR, and their national partners, like those of most other organizations add to a mosaic of activities which often are not integrated into a broader vision to bring all the parts together. The RUL thematic area we believe provides this conceptual framework through which connections can be made and value can be added. From the reaction we have had the concept is timely.

Introduction

Urban centers are increasingly affecting rural mountain areas. They act as strong destinations and sinks for agricultural and forest products, water, energy, nutrients, minerals and people. Unmanaged extraction and use of these resources is depleting the resource base necessary for future livelihoods for rural and urban people and function of mountain ecosystems, including agriculture. Already, deforestation, mining, water contamination and overuse, broken nutrient cycles and poverty driven emigration from rural areas are causing serious degradation of the natural resource base and are causing a decline in well-being and health of rural mountain populations. Similarly, urban areas are affected by a deterioration of rural mountain resources through reduced water quality and availability, lack of fuel and energy, overpopulation, availability of agricultural products and reduced scenic quality for recreation. On the other hand urban centers offer much potential as engines for rural development and transformation of agriculture. Better RUL planning and policy integration offer benefits to both rural and urban livelihoods and sustainable mountain development.

These issues are connected and cannot be investigated or dealt with in isolation. Many rural problems of poverty, food security, NRM and the environment cannot be solved without fundamentally including the urban or rural links in the management of rural resources. Unfortunately up to now rural and urban institutions and most actions, including those of the CGIAR have been categorized into either rural or urban. A conceptual framework is needed that links and integrates many of the key rural and urban processes needed for sustainable development and stewardship of mountains, and of bringing the often mosaic of development and research efforts together for impact on the MDGs.

There are numerous key knowledge gaps in understanding and improving the effectiveness of planning & policies that affect urban & rural livelihood and agro-environmental issues and there is a need for targeted livelihood options for groups with different access to markets that need concerted investigation for which the CGIAR as a whole has capacity. The issues need a focused, integrated research approach and territorial rather than sector based planning, policies and support strategies for sustainable mountain development. The Rural Urban Linkage conceptual framework is a

tool to bring together the resources of the CGIAR as well as national institutions for impact in a complex development objective (sustained rural and urban development) where in the past we have failed.

The GMP has made RULs a thematic area that enables CGIAR centers to use their strengths to as a system to add value to present efforts. Addis Ababa will be used as the first of its CGIAR wide benchmark sites. In the CGIAR system the GMP is launching this initiative initially in close collaboration with the African Highland Initiative and the System Wide Urban Harvest Program. The GMP has been joined in the venture by rural and urban development Ethiopian institutions research and civil institutions in an alliance.

In the MTP the GMP promised with these partners to develop an operational framework where research connects to development priorities and key groups. In the process methodology will be developed and tested using Addis Ababa as a benchmark case. To define research intervention areas in a planning process and collect of baseline data on actual livelihood and land-use issues and options of rural to urban mountain populations. More precise baseline information is needed on the inflows and outflows of goods from rural to urban areas and on the strengths and weaknesses of existing policies to optimize the benefits of RULs to attain national goals. Research would contribute to quantification of identified problems such as water availability and quality, forest degradation for fuel, migration and health and contribute to better targeting of support to mountain people. The Rural Urban linkage approach would provide the basis for actions using cities as engines for rural development through better incentives for environmental stewardship, such as Payment for Environmental Services (PES). In addition, the approach contains non-research components of development of a platform for stakeholder development action in each of the benchmark sites whose activities research would support with information and tools. This model provides for a clear supportive role of research for development in defined benchmark sites where MDG impact can be measured.

Establishment of benchmark sites in different continents should provide an opportunity for cross-site learning by stakeholder groups and the CGIAR and provide not only national, but international public goods that can be shared to support other mountain regions. The activity also is a tool to support CGIAR Science Council needs for interconnection between its priorities. Ethiopia was selected in 2005 through target mapping, as the first benchmark site since it is the largest mountain massive in Africa and has some of the highest poverty and malnutrition rates in the world.

MTP Output target 2006

In documenting progress according to the ever-narrower Science Council vision of valid output for the CGIAR we will separate the research-based outputs with the process-based outputs that are required to enable effective research inputs to the development process. Our efforts to launch this new initiative within the restrictive 20% of activities shows the absurdity of this untested or adequately discussed decision. Normally, such new initiatives simply could not be launched due to the start-up time needed.



Process outputs 2006

The program established itself at ILRI Addis Campus the base for many CGIAR groups and next door to the Ethiopian Institute for Agricultural Research. We have employed a regional research fellow through ICRAF who coordinating the task of spearheading the RUL effort in Ethiopia since March. After ICRAF pullout from Ethiopia the program has worked with CIP and ILRI to develop an agreement with ILRI to work in Ethiopia with ILRI privileges. In November the program obtained wheels.

To develop on operational framework for research products to respond to demand and flow into development process in mountains we have spent much time working with the Government of Ethiopia, national institutions such as MoARD, Municipal offices, EPA, the Donor Assistance group (DAG) some of the CGIAR groups such as SWIUPA and AHI, as well as IWMI, and CIFOR and some NGOs. The government of Ethiopia included the need for rural urban linkage action in its official 'five year plan' document the PASDEP just before we held the RUL planning workshop in August and the final



enriched PASDEP document was released in December, 2006 with more concrete emphasis to RUL in its strategic sections where the impact of our workshop and consultation are visible.

The workshop for the first time brought together sectoral groups and rural and urban groups under the theme RUL. Between 70-80 people participated in the two-day workshop. The meeting was televised and was also on major newspapers. Dr. Abera Deresa, the State Minister for Agriculture and Rural Development opened the meeting and a keynote address was made by Dr. Tewolde Berhan G/Egziabeher the General manager of EPA and the alternate Nobel Prize winner. The workshop built awareness on the various RUL sub-themes and working groups planned its operation of a RUL platform as well as key research areas based on the conceptual framework document developed by the GMP.

In the absence of other operational mechanisms, the establishment of a RUL platform as a key mechanism to promote inter-institutional dialogue and help coordinate and integrate activities was agreed on. The minister of Agriculture and Rural Development and the minister of Urban development will co-chair the platform. The GMP was asked to act as secretariat to facilitate the platform. The concept has been accepted by the government of Ethiopia. The donor community is particularly interested in such an operational framework and has increasingly supported the GMP actions. The GMP has now been invited as a member in three of their thematic discussion areas to bring in the

RUL linkage perspective. GMP is also now a member of the Technical Committee for the national sustainable land management (SLM) framework

Secondly, key research action areas were defined and are described in the research output section of the RUL concept paper. A research support group on RUL has been formed consisting of CGIAR Centers CIAT, CIFOR, CIP, ICRAF, IFPRI, ILRI, IWMI and the national program EIAR and university of Addis Ababa.

A proposal is being prepared to implement the next phase of the work at the request of the donor assistance group (DAG).

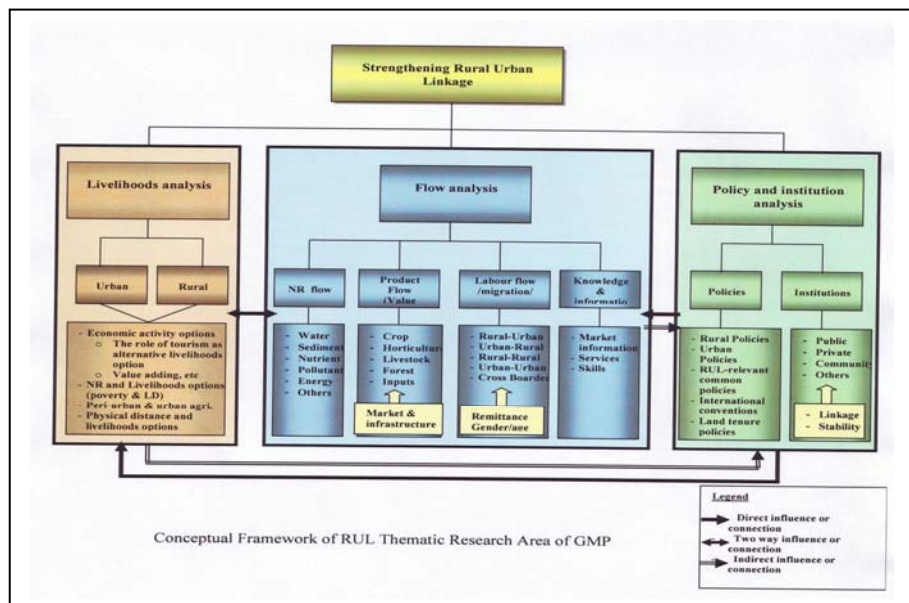
The research outputs 2006 (target achievement 80%):

Key spatial and socio economic issues have been identified through a process and through the conceptual concept paper. Research on migration issues has begun and the methodology is being documented. We have written a research plan for the alliance and ourselves as requested from the donors.

Key issues were identified in part through development of a concept paper, adjusted by consensus in the RUL planning workshop in August and documented in the proceedings.

Key action areas for research were defined at the workshop based on an analysis in the conceptual framework paper. The main areas of action were defined as presented in figure 1.

Figure 1: Conceptual framework of the RUL Thematic Research Area



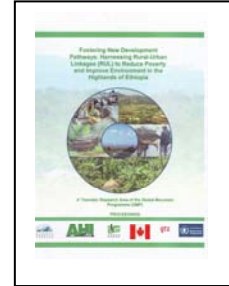
of GMP

Explanation of the framework

The RUL framework was designed to address the complex RUL issues in a holistic manner and is framed into three interconnected sub-thematic areas, namely livelihoods analysis, flow analysis and policy/institutional analysis.

- a. The livelihoods analysis: it was agreed to undertake this analysis both in rural and urban areas and will focus in assessing why communities in the selected target areas follow certain livelihood strategies and how that affects their wellbeing and mountain environment. Moreover, the assessment will address how their strategy is being affected by the strength or weakness of the linkage between rural and urban areas. Special emphasis will also be given towards looking for alternative livelihoods strategies which will strengthen RUL as well as improve environmental stewardship and wellbeing. These include tourism (taking into consideration cultural, historical and natural landscapes), transformation of agriculture considering available national, regional and global opportunities, value adding and access to services and market, etc.
- b. The flow analysis: the rural and urban systems are interconnected in the form of flows of natural resources, goods and services, people, capital, knowledge and information. Accordingly the framework provides a comprehensive assessment of the flow situation or status for the different elements between the two systems, drivers of flow both at the source and destination or sink areas, status or processes resulted from the flow of certain elements at both the source and destination areas and their impact both on rural and urban wellbeing and environment. It was also attempted to group flows into four major categories such as natural resources (under this category flows of water, energy, nutrients, pollutants, sediment, etc are considered), product flow or value chain analysis (all agricultural products related crop and livestock, forest products of different nature or form, inputs, etc) including market and market infrastructure will be conducted. The flow of labour or migration following different patterns between rural and urban areas as well as within each of the systems disaggregated in terms of gender and age will be investigated including drivers of migration, positive and negative impacts of migration both at source and destination areas, flow and utilization of remittance, policy and legal requirements, etc. The flows of knowledge and information in the form of market information, skill transfer, services, etc are the last category of the flow analysis.
- c. Policy/institutional analysis: the strength and weakness of policies and institutions can positively or negatively affect choice of livelihood strategies as well as flow systems and patterns. Often rural and urban development policies and strategies are crafted in isolation so also the institutes. It is, therefore, attempted to capture policy and institutional aspects both at rural and urban areas, how they affect livelihood strategies and flow regimes, institutional linkage and stability.

- Conceptual framework paper: a comprehensive concept paper that includes broader situation analysis of the rural-urban-linkage issues, the new conceptual framework, the general approaches and strategies to be followed, major outputs and key activities was developed commented by stakeholders including the government and was presented to the donor groups. It is accepted for pool funding.
- Proceeding: apart from the keynote addresses the proceeding has 13 lead papers addressing international and national perspectives of RUL, focusing on the three major sub thematic areas of the RUL framework and some crosscutting issues such as importance of small urban centers and migration. It has a comprehensive workshop summary, group work results and conclusion on the way forward. The proceeding is on press now.
- Poster: the concept paper was prepared in the form of poster including some progress thus far and was presented to the Market-Place exhibition prepared by ILRI on March, 2007. The poster gives a quick overview of GMP, thematic areas, RUL situation analysis, framework and approaches.
- Policy briefs on RUL and PASDEP: the broader RUL framework was reduced to fit into the national development agenda and was attempted how the RUL initiative can be instrumental to help implement the five year development strategies of the government, i.e., PASDEP. It shows possible areas of intervention and expected impacts. This is being circulated among the donor groups and government bodies.



Improved Information and tools for Mountain People

Background

One of the mission tasks of the GMP is to connect mountain relevant research products to support livelihood options between regions and continents, especially those associated with the CGIAR. To do so the program first needs a system of linking between continents and secondly products to transfer and offer mountain groups, be they decision makers, research groups or mountain communities.

Introduction



After 35 years work by CGIAR and national partners access for mountain people to locally relevant information and technological options is still a major bottleneck. To move forward requires clarifications of information bottlenecks, especially of the most marginalized, who are often indigenous groups. A strategy and methodology needs to be developed to overcome the bottlenecks and must include new opportunities of IT/communication technologies integrated into a comprehensive strategy; b) On the content side, although the CGIAR has over thirty years experience in working in mountain regions, to date there has been no attempt to bring together the CGIAR 'offer' for mountain regions. Surprisingly, many of the products of CGIAR

Centers are not easily accessible at present. Access to CGIAR products of the last 30 years and from other sources are valuable sources of options and tools that provide opportunities and choices for mountain people to better manage their specific needs. An effort has to be made to bring these valuable resources together.

As a first step the products of the CG system for mountain regions need to be collected, analyzed, packaged and targeted to make them better available to people as a information database, as a supermarket or an innovation marketplace. The products can be used to analyze the strengths and weaknesses of the CGIAR system research to reach the MDGs in mountains and to develop value added strategies to use the synergies of the system to better reach the MDGs in mountain regions. The collection process has been slower and more difficult than anticipated. The GMP has partnered for this task with the Mountain Forum, the international body set up to support mountain people with information.

The GMP is responding by linking up with the Mountain Forum (MF), the body set after Rio in 1992 up to support information and communication in mountains. This organization could be used effectively to move research products to the various target groups, and be a means also of providing information on research needs. Secondly, the program has begun to collect the mountain relevant 'products' to provide to mountains groups as options.

MTP output

The principal research products of the CGIAR Centers for mountains are available and accessible in the form of a supermarket or market place of innovations and opportunities. The strength and weakness of the CGIAR 'offer' to mountains is analyzed

Process output 2006

The Africa Node of the Mountain Forum supported almost fully by the GMP. The Node manager has succeeded in reestablishing a network and has enabled better communication in the African highlands by engaging its network in e-discussions, e-consultations on mountain issues, and issued a newsletter.

Research Output target 2006:

The major finished research products for mountains of AHI & ICRAF are documented and analyzed.

A second part of the work to support the information collection part of our output has so far been less successful. However, AHI information and tools have been collected. The task of designing a suitable format for collection has been completed. Three programs/Centers GMP/CIP, and ICRAF and AHI were used to obtain preliminary information. The products from AHI and GMP have been collected.

Engagement in the Global Dialogue on Mountains

Background

Maintaining momentum of to comply with commitments to Agenda 21 and Chapter 13 as well as chapter 14, has implications for the GMP as a System Wide Program of the CGIAR system.

The Adelboden Group

The GMP/CIP is a member of the Adelboden Bureau, which provides oversight and support to the SARD-M project and reports to the Adelboden group. The group is now preparing the 3rd Conference of the Adelboden Group in October 2007. The GMP is part of the working group to help prepare the meeting. In addition the GMP will moderate the e-consultation on 'recommendations on mountain policies' in April 2007.

GLOCHAMORE conference

The GLOCHAMORE is the a large EU funded program in mountains on Global change in mountain regions lead by the Mountain Research Institute (MRI). The GMP participated in the final conference of the GLOCHAMORE group and was present at the meeting finalizing key recommendations.

Mountain Forum

As mentioned throughout this report the GMP has close connections with the MF. Throughout 2006 we continued to support the Africa Node of the Mountain Forum to improve links and communication between African mountain groups. We participated in the Mountain Forum board meeting in Banff, Canada. We also made the first organizational steps for a joint planning workshop in 2007 on to take the first steps towards developing an 'innovation marketplace for mountain people'.

Mountain Partnership

We worked early in 2006 with the mountain partnership secretariat to support follow-up of agreements from the e-consultation in 2005 on the organizational structure and priorities of the SARD-M Initiative of the Mountain Partnership.

Finances

Funding in 2006 was dominated by a new grant from CIDA of CAN\$ 450,000 in March which translated to USD 376,000. In addition, the program received two grants from FAO at a total of USD 50,000. Unfortunately, the GMP did not receive funds from the SDC as had been expected.

Expenditure 2006

Funding source	Expenditure (USD)
CIDA Canada	300,399
SARD-M FAO	40,000
Total	348,399

Funding strategies during 2006, were to develop the RUL theme in Ethiopia with donor involvement to finance using bilateral funds the alliance and local activities of the program. Much of our time has been dedicated to working with the donors and the government as well as other partners to move the initiative forward. A proposal has been requested and we have had very positive response from the Donor Assistance Group (DAG). We are very optimistic about the funding possibilities.

PARTNERS

Global

The Mountain Forum (MF),
The Mountain Partnership (MP),
The Sustainable Agriculture and Rural Development in Mountains Project (SARD-M) at the United Nations Food and Agriculture Organization (FAO).

Africa

The African Highland Initiative (AHI),
Ethiopian Institute for Agricultural Research (EIAR)
World Agroforestry Center (ICRAF),
System Wide Urban and Peri Urban Agriculture Initiative (UH)

Latin America

Consortio para el Desarrollo Sostenible de la Ecorregion Andina (CONDESAN),
The Cuencas Andinas Program,
Instituto para la Desarrollo Regional "Chawpin Peru" (INDERCHAP),
Fundación para el Desarrollo sostenible Territorial (FUNDASOT),
NARS of Costa Rica, Mexico (until August)

Publications 2006

Bustamante, F., Rodriguez D. Moreno A. (2006) *Mejora de las políticas de apoyo para el desarrollo sostenible de las montañas: caso Peru*. GMP-CONDESAN-SARD-M 107 pp.

GMP (2006) *Annual Report 2005*. 19pp

Moreno A., Rodriguez D., Otero W. 2006. *Mejora de las políticas de apoyo para el desarrollo sostenible de las montañas: caso Colombia*. GMP-CONDESAN-SARD-M 91pp.

Zelege G. and Trutmann P.(2006) *The Rural Urban Linkage Conceptual Framework* Working Paper. GMP.